



» ALCOHOL &
ETHANOL
BIOMARKERS

The use of ethanol biomarkers such as Ethylglucuronide (EtG) and Ethylsulfate (EtS) has expanded greatly over the past few years. Both EtG and EtS are sensitive and specific biomarkers for alcohol consumption providing intermediate detection window between short and long term markers.

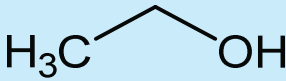
For EtG- and EtS-testing, LIPOMED provides native and deuterated reference standards supplied as calibrated solutions in methanol and in standard pack sizes of 10 mg, 50 mg and 100 mg.

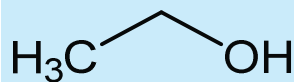
For more information, please check our website www.lipomed.com.

Are you also looking for Aqueous Ethanol Standards?

- » Currently available from LIPOMED: NIST-traceable Ethanol standards supplied in concentrations ranging from 10 mg/dL to 700 mg/dL.
- » Available in 1.2 mL ampoules
- » Supplied as calibrated standard solutions in water.

<p>Acetone Ethanol Isopropanol Methanol</p>	<p>Alcohol Mixture 4</p>		
<p>Acetone Ethanol Isopropanol Methanol</p>	<p>MIX-1808-0.1LH</p>	<p>0.1 mg /1 ml of each component</p>	<p>calibrated solution in water</p>
<p>Acetone Ethanol Isopropanol Methanol</p>	<p>Alcohol Mixture 4</p>		
<p>Acetone Ethanol Isopropanol Methanol</p>	<p>MIX-1808-0.2LH</p>	<p>0.2 mg /1 ml of each component</p>	<p>calibrated solution in water</p>
<p>Acetone Ethanol Isopropanol Methanol</p>	<p>Alcohol Mixture 4</p>		
<p>Acetone Ethanol Isopropanol Methanol</p>	<p>MIX-1808-0.3LH</p>	<p>0.3 mg /1 ml of each component</p>	<p>calibrated solution in water</p>
<p>Acetone Ethanol Isopropanol Methanol</p>	<p>Alcohol Mixture 4</p>		
<p>Acetone Ethanol Isopropanol Methanol</p>	<p>MIX-1808-0.4LH</p>	<p>0.4 mg /1 ml of each component</p>	<p>calibrated solution in water</p>

<p>Acetone Ethanol Isopropanol Methanol</p>	<p>Alcohol Mixture 4</p>		
<p>Acetone Ethanol Isopropanol Methanol</p>	<p>Alcohol Mixture 4</p>		
<p>Acetone Ethanol Isopropanol Methanol</p>	<p>Alcohol Mixture 4</p>		
<p>  </p>	<p>Aqueous Ethanol Standard Solutions (1.2 ml Ampoules)</p>		
	<p>Packs of 5, 10, 25, 50, 100 ampoules C₂H₆O M.W.: 46.07</p>		
	<p>ETH-010-1ML ETH-010-1ML-5AMP ETH-010-1ML-10AMP</p>	<p>10 mg Ethanol/1 dl</p>	<p>calibrated solution in water 1 pack of 5 ampoules 1 pack of 10 ampoules</p>
	<p>ETH-010-1ML-25AMP ETH-010-1ML-50AMP ETH-010-1ML-100AMP</p>		<p>1 pack of 25 ampoules 1 pack of 50 ampoules 1 pack of 100 ampoules</p>

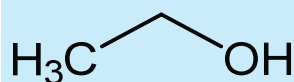


Aqueous Ethanol Standard Solutions (1.2 ml Ampoules)

Packs of 5, 10, 25, 50, 100 ampoules

C_2H_6O M.W.: 46.07

ETH-015-1ML	15 mg Ethanol/1 dl	calibrated solution in water
ETH-015-1ML-5AMP		1 pack of 5 ampoules
ETH-015-1ML-10AMP		1 pack of 10 ampoules
ETH-015-1ML-25AMP		1 pack of 25 ampoules
ETH-015-1ML-50AMP		1 pack of 50 ampoules
ETH-015-1ML-100AMP		1 pack of 100 ampoules

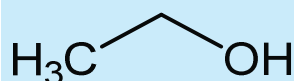


Aqueous Ethanol Standard Solutions (1.2 ml Ampoules)

Packs of 5, 10, 25, 50, 100 ampoules

C_2H_6O M.W.: 46.07

ETH-020-1ML	20 mg Ethanol/1 dl	calibrated solution in water
ETH-020-1ML-5AMP		1 pack of 5 ampoules
ETH-020-1ML-10AMP		1 pack of 10 ampoules
ETH-020-1ML-25AMP		1 pack of 25 ampoules
ETH-020-1ML-50AMP		1 pack of 50 ampoules
ETH-020-1ML-100AMP		1 pack of 100 ampoules

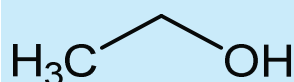


Aqueous Ethanol Standard Solutions (1.2 ml Ampoules)

Packs of 5, 10, 25, 50, 100 ampoules

C_2H_6O M.W.: 46.07

ETH-025-1ML	25 mg Ethanol/1 dl	calibrated solution in water
ETH-025-1ML-5AMP		1 pack of 5 ampoules
ETH-025-1ML-10AMP		1 pack of 10 ampoules
ETH-025-1ML-25AMP		1 pack of 25 ampoules
ETH-025-1ML-50AMP		1 pack of 50 ampoules
ETH-025-1ML-100AMP		1 pack of 100 ampoules

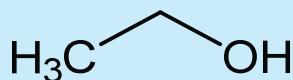


Aqueous Ethanol Standard Solutions (1.2 ml Ampoules)

Packs of 5, 10, 25, 50, 100 ampoules

C_2H_6O M.W.: 46.07

ETH-040-1ML	40 mg Ethanol/1 dl	calibrated solution in water
ETH-040-1ML-5AMP		1 pack of 5 ampoules
ETH-040-1ML-10AMP		1 pack of 10 ampoules
ETH-040-1ML-25AMP		1 pack of 25 ampoules
ETH-040-1ML-50AMP		1 pack of 50 ampoules
ETH-040-1ML-100AMP		1 pack of 100 ampoules

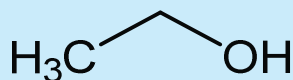


Aqueous Ethanol Standard Solutions (1.2 ml Ampoules)

Packs of 5, 10, 25, 50, 100 ampoules

C_2H_6O M.W.: 46.07

ETH-050-1ML	50 mg Ethanol/1 dl	calibrated solution in water
ETH-050-1ML-5AMP		1 pack of 5 ampoules
ETH-050-1ML-10AMP		1 pack of 10 ampoules
ETH-050-1ML-25AMP		1 pack of 25 ampoules
ETH-050-1ML-50AMP		1 pack of 50 ampoules
ETH-050-1ML-100AMP		1 pack of 100 ampoules

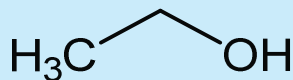


Aqueous Ethanol Standard Solutions (1.2 ml Ampoules)

Packs of 5, 10, 25, 50, 100 ampoules

C_2H_6O M.W.: 46.07

ETH-070-1ML	70 mg Ethanol/1 dl	calibrated solution in water
ETH-070-1ML-5AMP		1 pack of 5 ampoules
ETH-070-1ML-10AMP		1 pack of 10 ampoules
ETH-070-1ML-25AMP		1 pack of 25 ampoules
ETH-070-1ML-50AMP		1 pack of 50 ampoules
ETH-070-1ML-100AMP		1 pack of 100 ampoules

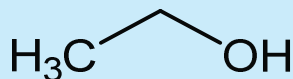


Aqueous Ethanol Standard Solutions (1.2 ml Ampoules)

Packs of 5, 10, 25, 50, 100 ampoules

C_2H_6O M.W.: 46.07

ETH-080-1ML	80 mg Ethanol/1 dl	calibrated solution in water
ETH-080-1ML-5AMP		1 pack of 5 ampoules
ETH-080-1ML-10AMP		1 pack of 10 ampoules
ETH-080-1ML-25AMP		1 pack of 25 ampoules
ETH-080-1ML-50AMP		1 pack of 50 ampoules
ETH-080-1ML-100AMP		1 pack of 100 ampoules

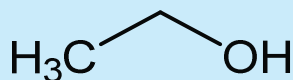


Aqueous Ethanol Standard Solutions (1.2 ml Ampoules)

Packs of 5, 10, 25, 50, 100 ampoules

C_2H_6O M.W.: 46.07

ETH-090-1ML	90 mg Ethanol/1 dl	calibrated solution in water
ETH-090-1ML-5AMP		1 pack of 5 ampoules
ETH-090-1ML-10AMP		1 pack of 10 ampoules
ETH-090-1ML-25AMP		1 pack of 25 ampoules
ETH-090-1ML-50AMP		1 pack of 50 ampoules
ETH-090-1ML-100AMP		1 pack of 100 ampoules

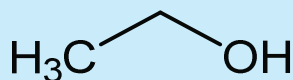


Aqueous Ethanol Standard Solutions (1.2 ml Ampoules)

Packs of 5, 10, 25, 50, 100 ampoules

C_2H_6O M.W.: 46.07

ETH-100-1ML	100 mg Ethanol/1 dl	calibrated solution in water
ETH-100-1ML-5AMP		1 pack of 5 ampoules
ETH-100-1ML-10AMP		1 pack of 10 ampoules
ETH-100-1ML-25AMP		1 pack of 25 ampoules
ETH-100-1ML-50AMP		1 pack of 50 ampoules
ETH-100-1ML-100AMP		1 pack of 100 ampoules

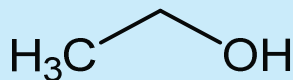


Aqueous Ethanol Standard Solutions (1.2 ml Ampoules)

Packs of 5, 10, 25, 50, 100 ampoules

C_2H_6O M.W.: 46.07

ETH-125-1ML	125 mg Ethanol/1 dl	calibrated solution in water
ETH-125-1ML-5AMP		1 pack of 5 ampoules
ETH-125-1ML-10AMP		1 pack of 10 ampoules
ETH-125-1ML-25AMP		1 pack of 25 ampoules
ETH-125-1ML-50AMP		1 pack of 50 ampoules
ETH-125-1ML-100AMP		1 pack of 100 ampoules

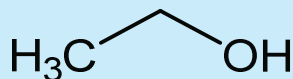


Aqueous Ethanol Standard Solutions (1.2 ml Ampoules)

Packs of 5, 10, 25, 50, 100 ampoules

C_2H_6O M.W.: 46.07

ETH-150-1ML	150 mg Ethanol/1 dl	calibrated solution in water
ETH-150-1ML-5AMP		1 pack of 5 ampoules
ETH-150-1ML-10AMP		1 pack of 10 ampoules
ETH-150-1ML-25AMP		1 pack of 25 ampoules
ETH-150-1ML-50AMP		1 pack of 50 ampoules
ETH-150-1ML-100AMP		1 pack of 100 ampoules

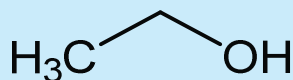


Aqueous Ethanol Standard Solutions (1.2 ml Ampoules)

Packs of 5, 10, 25, 50, 100 ampoules

C_2H_6O M.W.: 46.07

ETH-160-1ML	160 mg Ethanol/1 dl	calibrated solution in water
ETH-160-1ML-5AMP		1 pack of 5 ampoules
ETH-160-1ML-10AMP		1 pack of 10 ampoules
ETH-160-1ML-25AMP		1 pack of 25 ampoules
ETH-160-1ML-50AMP		1 pack of 50 ampoules
ETH-160-1ML-100AMP		1 pack of 100 ampoules

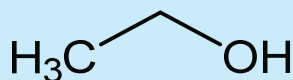


Aqueous Ethanol Standard Solutions (1.2 ml Ampoules)

Packs of 5, 10, 25, 50, 100 ampoules

C_2H_6O M.W.: 46.07

ETH-170-1ML	170 mg Ethanol/1 dl	calibrated solution in water
ETH-170-1ML-5AMP		1 pack of 5 ampoules
ETH-170-1ML-10AMP		1 pack of 10 ampoules
ETH-170-1ML-25AMP		1 pack of 25 ampoules
ETH-170-1ML-50AMP		1 pack of 50 ampoules
ETH-170-1ML-100AMP		1 pack of 100 ampoules

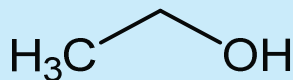


Aqueous Ethanol Standard Solutions (1.2 ml Ampoules)

Packs of 5, 10, 25, 50, 100 ampoules

C_2H_6O M.W.: 46.07

ETH-200-1ML	200 mg Ethanol/1 dl	calibrated solution in water
ETH-200-1ML-5AMP		1 pack of 5 ampoules
ETH-200-1ML-10AMP		1 pack of 10 ampoules
ETH-200-1ML-25AMP		1 pack of 25 ampoules
ETH-200-1ML-50AMP		1 pack of 50 ampoules
ETH-200-1ML-100AMP		1 pack of 100 ampoules

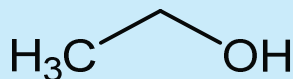


Aqueous Ethanol Standard Solutions (1.2 ml Ampoules)

Packs of 5, 10, 25, 50, 100 ampoules

C_2H_6O M.W.: 46.07

ETH-250-1ML	250 mg Ethanol/1 dl	calibrated solution in water
ETH-250-1ML-5AMP		1 pack of 5 ampoules
ETH-250-1ML-10AMP		1 pack of 10 ampoules
ETH-250-1ML-25AMP		1 pack of 25 ampoules
ETH-250-1ML-50AMP		1 pack of 50 ampoules
ETH-250-1ML-100AMP		1 pack of 100 ampoules

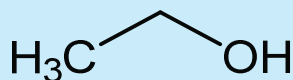


Aqueous Ethanol Standard Solutions (1.2 ml Ampoules)

Packs of 5, 10, 25, 50, 100 ampoules

C_2H_6O M.W.: 46.07

ETH-300-1ML	300 mg Ethanol/1 dl	calibrated solution in water
ETH-300-1ML-5AMP		1 pack of 5 ampoules
ETH-300-1ML-10AMP		1 pack of 10 ampoules
ETH-300-1ML-25AMP		1 pack of 25 ampoules
ETH-300-1ML-50AMP		1 pack of 50 ampoules
ETH-300-1ML-100AMP		1 pack of 100 ampoules

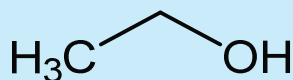


Aqueous Ethanol Standard Solutions (1.2 ml Ampoules)

Packs of 5, 10, 25, 50, 100 ampoules

C_2H_6O M.W.: 46.07

ETH-400-1ML	400 mg Ethanol/1 dl	calibrated solution in water
ETH-400-1ML-5AMP		1 pack of 5 ampoules
ETH-400-1ML-10AMP		1 pack of 10 ampoules
ETH-400-1ML-25AMP		1 pack of 25 ampoules
ETH-400-1ML-50AMP		1 pack of 50 ampoules
ETH-400-1ML-100AMP		1 pack of 100 ampoules

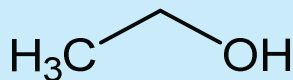


Aqueous Ethanol Standard Solutions (1.2 ml Ampoules)

Packs of 5, 10, 25, 50, 100 ampoules

C_2H_6O M.W.: 46.07

ETH-500-1ML	500 mg Ethanol/1 dl	calibrated solution in water
ETH-500-1ML-5AMP		1 pack of 5 ampoules
ETH-500-1ML-10AMP		1 pack of 10 ampoules
ETH-500-1ML-25AMP		1 pack of 25 ampoules
ETH-500-1ML-50AMP		1 pack of 50 ampoules
ETH-500-1ML-100AMP		1 pack of 100 ampoules

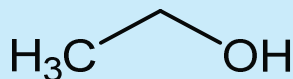


Aqueous Ethanol Standard Solutions (1.2 ml Ampoules)

Packs of 5, 10, 25, 50, 100 ampoules

C_2H_6O M.W.: 46.07

ETH-600-1ML	600 mg Ethanol/1 dl	calibrated solution in water
ETH-600-1ML-5AMP		1 pack of 5 ampoules
ETH-600-1ML-10AMP		1 pack of 10 ampoules
ETH-600-1ML-25AMP		1 pack of 25 ampoules
ETH-600-1ML-50AMP		1 pack of 50 ampoules
ETH-600-1ML-100AMP		1 pack of 100 ampoules

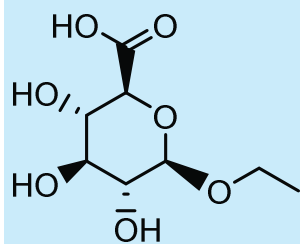


Aqueous Ethanol Standard Solutions (1.2 ml Ampoules)

Packs of 5, 10, 25, 50, 100 ampoules

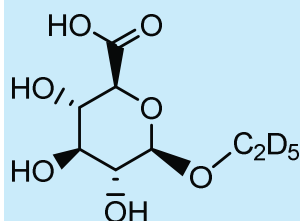
C_2H_6O M.W.: 46.07

ETH-700-1ML	700 mg Ethanol/1 dl	calibrated solution in water
ETH-700-1ML-5AMP		1 pack of 5 ampoules
ETH-700-1ML-10AMP		1 pack of 10 ampoules
ETH-700-1ML-25AMP		1 pack of 25 ampoules
ETH-700-1ML-50AMP		1 pack of 50 ampoules
ETH-700-1ML-100AMP		1 pack of 100 ampoules



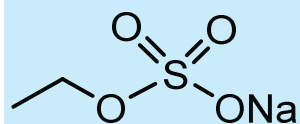
Ethyl-β-D-glucuronide (shipment under ice for solution)

$C_8H_{14}O_7$	M.W.: 222.19	
EGL-332-1LM	1.0 mg/1 ml	calibrated solution in methanol
EGL-332-10	10 mg	powder
EGL-332-50	50 mg	powder
EGL-332-100	100 mg	powder



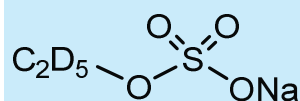
Ethyl-β-D-glucuronide-D₅ (shipment under ice for solutions)

$C_8H_9D_5O_7$	M.W.: 227.22	
EGL-780-0.1LM	0.1 mg/1 ml	calibrated solution in methanol
EGL-780-1LM	1.0 mg/1 ml	calibrated solution in methanol
EGL-780-1LM-5	5 mg/5 ml	calibrated solution in methanol
EGL-780-10	10 mg	powder
EGL-780-50	50 mg	powder
EGL-780-100	100 mg	powder



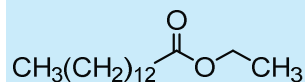
Ethylsulfate.sodium salt

$C_2H_5NaO_4S$	M.W.: 148.11	
ETS-972-NA-1LM	1.0 mg Na salt/1 ml	calibrated solution in methanol
ETS-972-NA-10	10 mg	powder
ETS-972-NA-50	50 mg	powder
ETS-972-NA-100	100 mg	powder



Ethylsulfate-D₅.sodium salt

$C_2D_5NaO_4S$	M.W.: 153.14	
ETS-979-NA-0.1LM	0.1 mg Na salt/1 ml	calibrated solution in methanol
ETS-979-NA-1LM	1.0 mg Na salt/1 ml	calibrated solution in methanol
ETS-979-NA-1LM-5	5 mg Na salt/5 ml	calibrated solution in methanol
ETS-979-NA-10	10 mg	powder
ETS-979-NA-50	50 mg	powder
ETS-979-NA-100	100 mg	powder

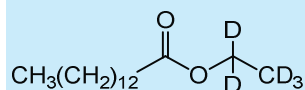


Ethyl Myristate

Synonym : Ethyl tetradecanoate

$\text{C}_{16}\text{H}_{32}\text{O}_2$ M.W.: 256.42

FAE-1453-1LA 1.0 mg/1 ml calibrated solution in acetonitrile



Ethyl Myristate-D₅

Synonym : Ethyl tetradecanoate-D₅

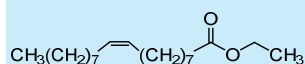
$\text{C}_{16}\text{H}_{27}\text{D}_5\text{O}_2$ M.W.: 261.45

FAE-1697-1LA 1.0 mg/1 ml calibrated solution in acetonitrile

FAE-1697-10 10 mg colorless liquid

FAE-1697-50 50 mg colorless liquid

FAE-1697-100 100 mg colorless liquid

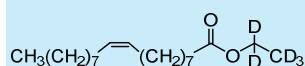


Ethyl Oleate

Synonym : Ethyl (cis)-octadec-9-enoate

$\text{C}_{20}\text{H}_{38}\text{O}_2$ M.W.: 310.52

FAE-1452-1LA 1.0 mg/1 ml calibrated solution in acetonitrile



Ethyl Oleate-D₅

Synonym : Ethyl (cis)-octadec-9-enoate-D₅

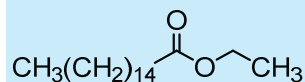
$\text{C}_{16}\text{H}_{33}\text{D}_5\text{O}_2$ M.W.: 315.55

FAE-1696-1LA 1.0 mg/1 ml calibrated solution in acetonitrile

FAE-1696-10 10 mg colorless liquid

FAE-1696-50 50 mg colorless liquid

FAE-1696-100 100 mg colorless liquid

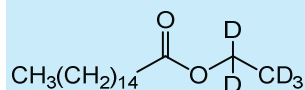


Ethyl Palmitate

Synonym : Ethyl hexadecanoate

$\text{C}_{18}\text{H}_{36}\text{O}_2$ M.W.: 284.48

FAE-1451-1LA 1.0 mg/1 ml calibrated solution in acetonitrile



Ethyl Palmitate-D₅

Synonym : Ethyl hexadecanoate-D₅

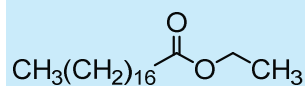
$\text{C}_{18}\text{H}_{31}\text{D}_5\text{O}_2$ M.W.: 289.51

FAE-1695-1LA 1.0 mg/1 ml calibrated solution in acetonitrile

FAE-1695-10 10 mg colorless liquid

FAE-1695-50 50 mg colorless liquid

FAE-1695-100 100 mg colorless liquid

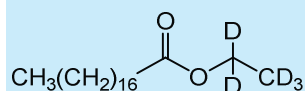


Ethyl Stearate

Synonym : Ethyl octadecanoate

$\text{C}_{20}\text{H}_{40}\text{O}_2$ M.W.: 312.53

FAE-1454-1LA 1.0 mg/1 ml calibrated solution in acetonitrile



Ethyl Stearate-D₅

Synonym : Ethyl octadecanoate-D₅

$\text{C}_{20}\text{H}_{35}\text{D}_5\text{O}_2$ M.W.: 317.56

FAE-1698-1LA 1.0 mg/1 ml calibrated solution in acetonitrile

FAE-1698-10 10 mg powder

FAE-1698-50 50 mg powder

FAE-1698-100 100 mg powder

<p>Acetone Ethanol Isopropanol Methanol</p>	<p>Alcohol Mixture 4</p>		
<p>Acetone Ethanol Isopropanol Methanol</p>	<p>MIX-1808-0.1LH</p>	<p>0.1 mg /1 ml of each component</p>	<p>calibrated solution in water</p>
<p>Acetone Ethanol Isopropanol Methanol</p>	<p>Alcohol Mixture 4</p>		
<p>Acetone Ethanol Isopropanol Methanol</p>	<p>MIX-1808-0.2LH</p>	<p>0.2 mg /1 ml of each component</p>	<p>calibrated solution in water</p>
<p>Acetone Ethanol Isopropanol Methanol</p>	<p>Alcohol Mixture 4</p>		
<p>Acetone Ethanol Isopropanol Methanol</p>	<p>MIX-1808-0.3LH</p>	<p>0.3 mg /1 ml of each component</p>	<p>calibrated solution in water</p>
<p>Acetone Ethanol Isopropanol Methanol</p>	<p>Alcohol Mixture 4</p>		
<p>Acetone Ethanol Isopropanol Methanol</p>	<p>MIX-1808-0.4LH</p>	<p>0.4 mg /1 ml of each component</p>	<p>calibrated solution in water</p>

Notes

Lined area for taking notes, consisting of 20 horizontal lines.

Contact Information

Bill to	Ship to (if different from invoicing address)
Customer/Company	Customer/Company
Department	Department
Address	Address
Contact Person	Contact Person
City, ZIP	City, ZIP
State, Country	State, Country
Phone	Phone
Fax	Fax
E-Mail Address	E-Mail Address
No of pages (incl. this one)	Customer Account #
Date of Request	Purchase Order
Special instructions/Notes	

Product List

Article-No.	Product Name	Qty	Unit Price	Total Price

Fax France +33 3 88 96 50 73 | Germany +49 7621 1693 474 | USA +1 617 577 1776 | CH & other countries +41 61 702 02 20
E-Mail USA ussales@lipomed.com | All other countries lipomed@lipomed.com
In case a permit is needed, please attach original permit along with your order and send it to LIPOMED per mail.
Reference Standards orders are subject to LIPOMED's standard Terms and Conditions of Sale.

Ordering & other information

LIPOMED is a private Swiss Health Care Company. We are one of the leading companies for Analytical Reference Standards worldwide and specialized in the research, development and manufacturing of ethical pharmaceuticals and products for the treatment of rare diseases.

Since 1993 LIPOMED is dedicated to providing products and services of outstanding quality and expertise. We have our own GMP/GDP and ISO 9001 certified pharmaceutical production facilities in Arlesheim, near Basel. We are also ISO/IEC 17025 accredited for testing of Analytical Reference Standards and ISO 17034 accredited for the production of Reference Material.

Our innovative products are marketed and distributed with offices and partners in more than 50 countries around the world.

LIPOMED's Analytical Reference Standards currently include the following classes of substances, their deuterated analogues and metabolites, such as Glucuronides and Sulfates:

- » Alcohol & Ethanol Biomarkers
- » Amphetamines & Sympathomimetic amines
- » Antidepressants
- » Antipsychotics
- » Barbiturates
- » Benzodiazepines
- » Cannabinoids
- » Cathinones
- » Cocaines
- » Custom Mixtures
- » Hallucinogens
- » Opioids
- » Other CNS Depressants
- » Steroids
- » Vitamins

For more information about LIPOMED's Analytical Reference Standards, please visit our website www.lipomed.com.

SWITZERLAND (HEADQUARTERS)

LIPOMED AG
Fabrikmattenweg 4
4144 Arlesheim
Switzerland
Tel +41 61 702 02 00
Fax +41 61 702 02 20
lipomed@lipomed.com

GERMANY

LIPOMED GmbH
Hegenheimer Str. 2
79576 Weil am Rhein
Germany
Tel +49 7621 1693 473
Fax +49 7621 1693 474
lipomed@lipomed.com

USA, CANADA, BERMUDA

LIPOMED Inc
150 Cambridgepark Drive
Cambridge, MA 02140
USA
Tel +1 617 577 7222
Fax +1 617 577 1776
ussales@lipomed.com



LIPOMED AG, Switzerland is **GMP/GDP** and **ISO 9001** certified for production and distribution of Pharmaceuticals and **ISO/IEC 17025** (ANAB certificate no. AT-1760) accredited for testing of Analytical Reference Standards and **ISO 17034** (ANAB certificate no. AR-1761) accredited for Reference Material production. All products distributed by LIPOMED affiliates are manufactured by LIPOMED AG and distributed under protocols of LIPOMED AG.

